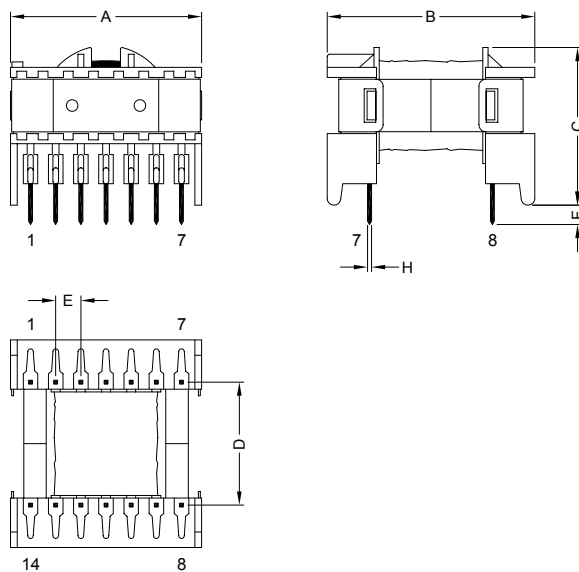


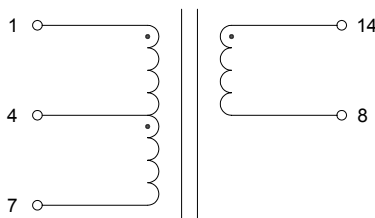
1. CONFIGURATION & DIMENSIONS :



Unit:m/m

| A | B | C | D | E | F | H |
|------------|------------|------------|------------|-----------|-----------|-------------|
| 40.00 Max. | 44.00 Max. | 35.00 Max. | 25.40±0.30 | 5.00±0.30 | 4.00±0.50 | SQ0.80 Ref. |

2. SCHEMATIC :



3. SCHEMATIC :

- a) Bobbin : PBT
- b) Core : ETD34
- c) Wire : Polyurethane DD
- d) Tape : Polyester Film
- e) Varnish : Synthite AC-43
- f) Clip : ETD34



RoHS Compliant

NOTE : Specifications subject to change without notice. Please check our website for latest information.

26.06.2008



SUPERWORLD ELECTRONICS (S) PTE LTD

4. GENERAL SPECIFICATION :

- a) Operating Temperature Range : -25°C to +105°C
- b) Insulation Class : B (130°C)

5. ELECTRICAL CHARACTERISTICS :

| Part No. | Inductance (L) | Conditions | Test Frequency | DCR @ 25°C |
|----------------|------------------------|------------|-------------------|--------------------|
| ETDD4HTF-50738 | L : (1-7) = 0.49mH±25% | - | 10KHz 50mV | (1-4) = 14mΩ Max. |
| | | | | (14-8) = 56mΩ Max. |
| | | | | (4-7) = 18mΩ Max. |



RoHS Compliant

NOTE : Specifications subject to change without notice. Please check our website for latest information.

26.06.2008



SUPERWORLD ELECTRONICS (S) PTE LTD